



May 2009

June deadline: May 22, 2009

The Village of Port Alice RUMBLE SHEET

www.portalice.ca

Village Council News

- Arena News Pg 3
- Community Centre News Pg 4
- Community Health News Pg 5/6
- Community News & Advertising Pg 7
- Classified Ads Pg 13

Municipal Office Hours of Service

Monday - Friday
9:00 am - 5:00 pm

Closed for Lunch
1:00-2:00

Reminder

Utility bills are due
May 31st.

10% penalty will be
added to unpaid
accounts.

Village Council Meetings

April Council Meetings will be held May 13th and May 27th. Meetings are held at the Village Office at 7 pm and are open to the public - you are most welcome to attend. If you have questions, there is a 'question period' at the end of each meeting, for this purpose. If you have an item you wish Council to address, and would like 'delegate status', please submit a letter on or before the Friday before a meeting is to be held.

Mayor:

Gail Neely 284-3927

Councillors:

Ardie Bazinet 284-3562
 Bruce Lloyd 284-3365
 Dawn Martynyk 284-0076
 Don Vye 284-6207

Important Local Phone Numbers

ANY EMERGENCY 911
 RCMP-non emergency 284-3353
 Doctors Clinic 284-3555
 Health Centre 284-3555
 School 284-3315
 Municipal Office 284-3391
 Community Centre 284-3912
 Public Works 284-6612
 BC Road Conditions 1-800-661-2324
 Wildlife 1-877-952-7277

(If you see a cougar/bear also call RCMP)

VILLAGE OF PORT ALICE NOTICE

1993 GMC Pickup Truck for Sale

The Village of Port Alice is inviting expressions of interest to anyone interested in purchasing a 1993 GMC 2500, two wheel drive, pickup truck, as is where is.

The vehicle is in running condition and has just over 170,000 kilometres on it.

To submit your bid, please place it in a "sealed envelope" marked "1993 GMC Pickup" and drop it off at the municipal office. Bids will be accepted up to 5:00 pm, Friday, May 15th, 2009. The truck will be available to the successful bidder at the end of May or first part of June, 2009.

**THE VILLAGE OF PORT ALICE RESERVES
THE RIGHT TO REJECT ANY OR ALL
PROPOSALS AND TO ACCEPT ANY
PROPOSAL IT CONSIDERS
ADVANTAGEOUS.**

Port Alice Volunteer Fire Department

New members are needed

Please drop by the municipal office
to pick up an application or drop
by the fire hall at 7:00 pm Tuesday
nights



Port Alice Tourism/Heritage Centre

The Centre is open

**Monday to Friday
9 am – 5 pm**

The Info Centre has great
gift items made by local
artisans.

**Drop by for a look and
buy local!!**



Councillor Lloyd's Column

(The views expressed within this article are the
personal opinions of Councillor Bruce Lloyd)

As I write the village trees are finally coming into bloom a month late or so. Hopefully the spring will indeed arrive and after it the summer? Our new contract gardener, Lore Kristiansen who replaced our perennial gardener Heather McNeivitts this year, is having a heck of a time in this weather with frost in late April making planting impossible! But bear with it as she will eventually be able to get in full gear I am sure.

The Rumble Rage bike race, spring flea market and our ongoing recreation programs at the Community Centre are to be looked forward to by residents. Keep an eye on the bulletin boards for these and other activities.

We want to welcome Kevin Cameron to our fold of municipal employees. He will be taking over for Mel Baker in the role of Mechanic - Labourer now that Mel has joined the "leisurely class." Congratulations to both.

I would like to ask the residents to consider the fact that our boulevards are one of the beautiful aspects of our pretty little town. Although they adjoin our properties, they are not owned by us and thus, in my opinion should be treated respectfully whenever we "borrow" them so to speak for some purpose. Thankfully, we have seen improvement in recent years with the surging metal markets and have witnessed many old vehicles removed from our streets. One can hope this trend will continue. In fact, most will know, the parking of unlicensed vehicles of any sort on our boulevards is only legal and acceptable when they are fully insured. With the upcoming hiring of a "Director of Operations" in the near future it is anticipated that this situation and other bylaw infractions will begin to be monitored and enforced more often. But the other aspect of people using the boulevards as their own which should be considered is the hope that they will avoid making mud holes of them and also try to not use them permanently for such things as gravel, RV, boat and tractor storage etc. In short, the town is gracious in its allowance of these lands for various uses, but it reserves the right to prevent itself from becoming an eyesore. We ask for your consideration and co-operation on this.

Roses and Thornes

Roses to all the people who stopped to help us after the car went off the road. Special thanks to Gordie, Rod Watson and the gentleman from Campbell River who brought me to the hospital. Thank you to Dr. MacKenzie for his care.

Cathy Beckett

Roses to the Medical Clinic Staff for being there for everyone in Port Alice

Thornes to whoever threw eggs at Audrey Clark's house



***Watch for notices
of Summer Student
Employment
Opportunities -
coming soon!!!***

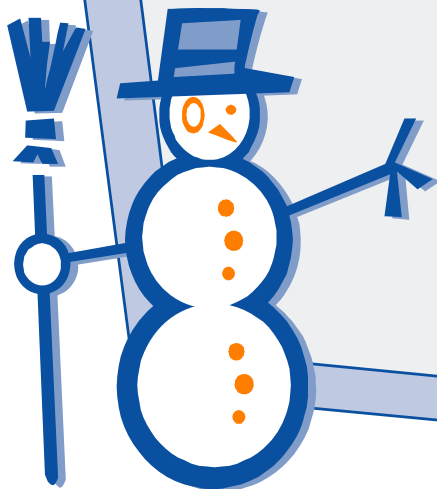


Arena News

Now closed for the season.....will
reopen in October 2009

A Huge Thank you to all who supported
the arena this season - we hope to see
you all back next season!

Have a safe summer!!!!



Community Centre News.....

Community Centre Hours

Monday - Sunday
6:30-10:00 pm

Step into Spring this month at the Community Centre! There are lots of ways to stay active and healthy for all ages. The Community Centre welcomes you to participate in FREE activities offered 7 nights per week. Scheduled activities include floor hockey, badminton, volleyball, ping-pong, basketball, soccer, and open gym. We supply all equipment (a \$1.00 returnable deposit is required to borrow balls, hockey sticks and racquets)

Rumblefest 2009
XC Rumble Mountain Rage –
June 6th
DH Rumble Tumble
– June 7th
www.rumblefest.com

The count down has begun!
Come out and watch the action, and cheer on the racers! Spectators are welcome anywhere along the race course but please use caution and yield to the participants. Maps of the race course are available at the Community Centre. Registration forms will be available soon!
Check out www.rumblefest.com for maps, registration forms, race details and more!

MANY MANY Volunteers Needed!!
For more information do not hesitate to call us at 284-3912 evenings or e-mail us at pacc@cablerocket.com

LIVING WITH CANCER SUPPORT GROUP

Will be held on the 4th Wed. of every month at the Community Centre from 7:00 pm to 9:00 pm

Everyone is welcome

Sandra 250-284-3301

Florence 250-284-6658

Adult Badminton Sunday and Wednesday 8-10 pm

Great exercise and lots of fun for all!
We supply racquets and birdies.

Thursday Night Volleyball

Come out for some great exercise at adult Volleyball

8-10 pm

Open Gym for 12 and Under!! Mondays & Thursday 6:15-7:00 pm

We will be starting two weekly Family Open Gym times anyone 12 and under.

This time will need to have some parental supervision.

Come down and enjoy the gym without the "big kids"

Tot Time

Tuesdays and Fridays 9-10:30 am

Enjoy playtime with our tot toys with other Children aged 5 and under.

Parents must supervise

Yoga

Join instructor Leanne Watson for Yoga classes held on **Monday and Wednesday** nights from 6:45-8 pm in the Community Centre boardroom. Rediscover those hidden muscles you forgot were there

Western Weight Room

The Western Room is an affordable and convenient way to get in shape. Work at your own pace. We have a variety of weights for those who want to pump it and cardio for those who just want to get some exercise even when it is pouring outside. Pass prices are as follows:

\$20.00 one month pass
\$30.00 two month pass
\$150.00 one year pass
\$45.00 one month family pass

Canada Day Celebrations! July 1st

Schedule will be posted.
If you have something you would like to see at Canada Day come in and let us know.

Make a float or decorate your bike and be in the parade!!

Challenging all businesses to get involved! Plan an activity, build a float, and help us celebrate Canada Day!



Crisis Line

"Empowering People"

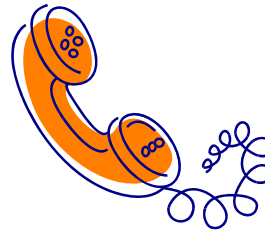
Crisis Line

"Empowering People"



Whatever the reason:

- Just to talk
- Sexuality
- Feeling sad
- In a crisis



- In danger
- Suicidal feelings
- Feeling lonely
- Teen & seniors issues

24/7 call anytime

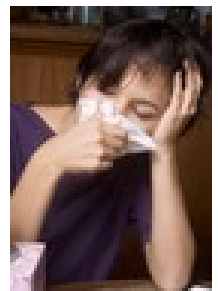
Local Port Hardy Area

250-949-6033

250-974-5326

Outside our local area:

Zenith 2983



The Crisis Line is funded by



Local in
ALERT BAY
& Kingcome

We provide anonymous, confidential, and non-judgmental emotional support for those in need

Staff & volunteers are professionally trained and provide up to date information and referrals including emergency services or 911 for life saving interventions

Community Health Information

Ambulance



In response to the growing need for AMBULANCE SERVICES in remote areas of our province **WE NEED YOU**

Port Alice Ambulance Service is currently looking for individuals that may be interested in joining a growing team of REMOTE service **Emergency Medical Response** personnel all across the province.

If you are at all interested in finding out more information on how you can become a part of this exciting opportunity please contact **Chandra Hovde** at **284-3590** for details.

Port Alice Health Forum

Drivers are available and will volunteer their time if rides to Port McNeill or Port Hardy for **medical appointments** are needed. Reimbursement for expenses is appreciated.

24 Hours advance notice is preferred, but in the case of unforeseen emergencies we will try to meet your needs.

If you need a ride to the local hospital please give us a call.

If you are travelling to Port Hardy or Port McNeill and would be willing to offer a ride to someone, please let us know.

Contact 284-6109 or 284-3216

We Need More Volunteer Drivers – you must have a drivers abstract (available from any ICBC outlet) and be fully insured. Please contact Jim Overland at 284-3216 if you would like to help.

Employee & Family Assistance Program/Assessment & Resource Service

Our services are here to support you. If you need us do not hesitate to call

1-250-956-3144

Do You Need a Ride?

Cancer patients needing rides to appointments call Edna O'Flynn – the CSS Driver Coordinator in Port Hardy

Phone 949-7874.

People needing rides for non-emergency medical appointments down island call the **Wheels for Wellness Society**. This society offers free

transportation to and from appointments.

These rides are offered for distances exceeding 75 km only. It is hoped to further expand this service in the future. Donations towards expenses are welcome but not required. For more info call Don Buchner at 250-338-0196

Public Health Clinic

Friday

Please call 250-284-3555 ext 228 for an appointment

Baby Clinics are 2:30-3:30pm

Port Alice Medical Clinic

Located in the Health Centre

Please contact the Medical Clinic for hours of operation until further notice.

284-3555 (ext 228)

Port Alice Health Centre

Located at 1090 Marine Drive is open 7 days a week from 8:30 – 4:30. A nurse is on duty during these times

284-3555

Mental Health Clinic

Held weekly or bi-monthly at the Port Alice Health Centre, by doctor of self-referral

Contact Don Hackler, MSW @ 949-8611 to set up an appointment time.

North Island Infant Development Programme Society

When your baby needs extra help

#10-7070 Market Street, Box 42 Port Hardy, BC V0N 2P0

Phone 250-949-3031

Fax 949-3038

North Island Counseling Services

Mental Health & Alcohol/Drug

Email: mentalh@island.net
949-8611

NI Assessment & Referral
Email: hopeful@island.net
949-3144

NI Community Services
Email: nicsbc@telus.net
956-3134

NI Crisis & Counselling
Email: reception@nicccs.org
Crisis Line: 949-6033
949-8333



Community News and Advertising



First Saturday of July this year, the 4th of July!

Traditional West Coast Logger Sports Day & Dance!

The whole family will enjoy this event...

Kids, Competitors, Spectators!

Something for everyone!

Contact WFP Jeune Landing at 284-3514

Watch for more details next month!



F.P. Foods Ltd.

284-3525

Full Service Supermarket

Fresh Meat Department – Produce
Department – In Store Bakery

Deli – featuring Quality Sliced Meats &
Cheeses, Take-out Chicken, Soft Ice
Cream, "Super Subs"

Sporting Goods

Monday to Saturday 10:00 am -6:00 pm

Sundays - Closed



Keen – agers' Korner

We are open

Monday to Saturday
11:00am to 2:00pm.

We are closed on Sundays.

**There will be no scheduled drop-in
or exercise until after we move!!!**

No meetings until after we move

Port Alice Golf Club

Marine Drive (at Neucel Pulp Mill)

284-3213

Club House opens daily at 11 am
Fairways open 365 days per year
No waiting list, No tee times, No pushy
course marshals.

Come out and enjoy the Club !!

TSUSQUANA SINGERS

Of Port Hardy

Are celebrating our 40th Anniversary
with a reunion concert and a weekend
full of music and fun

May 15-18, 2009

All former members are invited!

For more information please contact
Shannon Barry Tel. 250-949-9950

skbarry@telus.net

or

Cora Nelson Tel. 250-949-7867

knelson@telus.net

Hats off for Cancer

Please drop off clean or new hats to 974 Haida Ave. We have now taken 3150 hats to 1st Choice Fitness in Port Hardy to Sharon Whitehead.

These hats are given to children with cancer. We collect the hats year round, as unfortunately, there are many children with this terrible illness. Thank you for helping bring a smile to these little faces.

Attention all Port Alice Non Profit Groups

Free advertising on your local radio station The Port 100.3fm Port Alice. Neucel

Specialty Cellulose purchased an Island Life sponsorship for you to advertise your events for public notice. All you have to do is call 250 949-6500 or fax 250 949-6580 or simply email the info to cfnradio@cablerocket.com

Community News and Advertising Cont.....

CARDIO CLASSES



(Hydraulic Circuit Training Equipment)

*GOT 30 MIN. IN YOUR DAY FOR A **FULL BODY** WORKOUT?
THEN THIS IS FOR YOU!*

LOCATION: Old Dance Studio (Sr. Centre)

TUESDAY, WEDNESDAY, THURSDAY,
9:00 – 9:30 AM
MONDAY, TUESDAY, WEDNESDAY, THURSDAY
4:30 – 5:00 PM
SUNDAY @ 1:00 – 1:30 PM

COST: \$5.00 DROP-IN
\$30.00 – 10 SESSION PASS



YOUR FIRST CLASS IS FREE!

For more information call Michelle Reimer @ 284-3503

*Profiles Hair
Design*



Donna McInnis

1038 Rupert Ave

Hair cuts, perms, colors

Call 250-284-3425

***Rumble Beach
Fishing Charters
& Sightseeing
Tours***

Regan Hickling - 30
years experience in
local waters
250-284-6204
250-209-2779

**Epicure
Selections**

A world of fine foods
For the home chef

Provide a quick, easy and fun approach
to contemporary cooking. Our blends
of herbs & spices are made using the
best ingredients available in todays
world market.

Call for a catalogue today!

For information or to attend a
training session, call or email

Lisa Ager
250.284.3990



**Trevor's
Tree Services**

Tree topping, pruning
and complete tree removal.

(250) 284-0074 or
(250) 209-5050

**J.R. Carpentry
250-284-6274
Specializing in Small
Renovations**

Over 40 years of experience

No job is to small!!

TIRES 'N' TREADS

Anything you need for tires & wheels
Tire Repair-Wheel Balancing-Tire Sales-
Chains

SCOTT SINCLAIR - 284-6248 or 209-
1974

Community News and Advertising Cont.....

**Carpentry, Renovation
Cleaning Services**

Garden or House

**Kjell Kristiansen
Lore Kristiansen
284-3956**

**Pacific Rim Carpet
Cleaning**

**TRUCK MOUNTED
EQUIPMENT**

Upholstery Cleaning &
Carpet repairs available

**Ron McElhinney
250-956-3365**

Hannelore Kristiansen



*Commissioning
Portraits
Landscapes
Seascapes
250-284-3956*

Rumble Beach Falling

For all your tree removal needs,
pruning, topping, limbing,
Residential or Business

Certified Faller - 25 years
experience

On call for Village of Port Alice
Reagan Hickling 250-284-6204

**Ocean View Restaurant
(at Ozzieland)**

Enjoy daily homemade soup and
sandwich specials.

Open
Mon-Fri 7:00am-7:00pm
Sat 9am-7pm
Sundays Breakfast only 10am-2pm



Mini Excavator w/operator and dumping 5 ton
trailer.

Serving Port Alice, Port Hardy, Port McNeill and
surrounding areas.

Low impact travel on grass or roadways due to its
rubber tracks.

Undercarriage retracts to just under 39" to fit
through most garden gates and access hard to get
at jobs.

Available for:

Trenching - Foundation inspection - Drain Tile
replacement and foundation coating - Prep Grading
and Concrete work - rock and stone placement -
Trail building & Maintenance - Stump removal -
Footings - Septic tanks and field installations.

Anything you don't want to shovel by hand

Aaron Neely
PH 250-209-6318

Triport.contracting@yahoo.ca

**RAINCOAST
BOOKKEEPING LTD.**

1-877-287-2289

Income Tax *
Accounting* Payroll
for your small business

910C Island Highway,
Campbell River, BC

Sharon Unwin

Offering 25 years
experience

**Castaway
Marine Charters
Fishing &
Sightseeing**

Larry Pepper
Fishing the Quatsino
Sound since 1978
250-284-3572

Community News and Advertising Cont.....

Port Alice Lions Club

We are a non-profit organization which helps out our community and all those that live here. Are you looking for something to do during the winter? Would you like to help out your community? We are always looking for new members to join our team. For further information please call Audie Tamburini at 284-6663 or Terressa Cliff at 284-6630. Please think about it and give us a call.

PORT ALICE LIONS CLUB USED EYE GLASSES AND HEARING AIDS RECYCLE FOR SIGHT AND HEARING PROGRAM

The Port Alice Lions Club is collecting used eye glasses – lenses, frames, or both, and used hearing aids. These are refurbished and sent to third world countries for distribution, by opticians, to people in need who are unable to afford to buy these items.

Collection boxes are located in the Village Office and FP Foods. For further information, contact Lion Roger Moulton, 250-284-3255. Thank You.

Your unwanted glasses and hearing aids will help someone to see and hear better.

If there is anyone in the community in need of a hearing aid, the Lions Club can help. Contact Roger Moulton, 250-284-3255 for information.

Port Alice Fish & Wildlife Association

Are you interested in outdoor recreation and conservation? Consider membership in Port Alice Fish & Wildlife Federation. Fee of \$30 includes membership to BC Wildlife Federation which is a province wide volunteer conservation organization representing all British Columbians whose aim is to protect, enhance, and promote wise use of the environment for the benefit of present and future generations. The Federation is BC's largest and oldest conservation organization. Check out www.bcdf.bc.ca
Contact Jamie (250)284-3420



PORT ALICE RECYCLING SOCIETY

**Winter Hours
Saturday 10 am - 2 pm**

Please ***do not put cardboard into the big blue bin*** at the recycling yard. There is a cardboard collection site at the right side of the yard.

****CARDBOARD MUST BE FLATTENED **
BEFORE PUTTING IT IN THE DEPOT
COLLECTION SITE.
IT WILL NOT BE PICKED UP UNLESS IT IS
FLATTENED**

Regional District/Seven Mile charges an additional fee for cardboard in the garbage. Please help Port Alice keep down the costs of garbage disposal.

New! If you are a shut-in or a senior without a vehicle, you can phone Cathy at 284-3215 to arrange to have your recycling picked up.

Now accepting No.2 plastics.

Battery Recycling:

- The Depot is now accepting **both Alkaline and Rechargeable Batteries** for recycling.
- Rechargeable batteries eligible for collection and recycling are: Nickel Cadmium (Ni-Cd), Lithium Ion (Li-ion), Nickel Metal Hydride (Ni-MH) and Small Sealed Lead (Pb).
- Small dry cell portable rechargeable batteries are commonly found in cordless power tools, cellular and cordless phones, laptop computers, camcorders, two-way radios and remote control toys. Please help keep the outside depot clean and rodent free. Rinse your milk jugs, plastics and tins and remove any caps.

NO GLASS please

***Cops for Cancer WestJet Tickets
On Sale Soon!!!***

Return trip for two
anywhere that WestJet flies

Limited Tickets Printed
\$10.00 each
Watch channel 10 for more details

**Cops for Cancer - Tour de Rock
Proudly presents**

Canadian Fiddle Champions of Canada

May 9th at the Community Centre
7:30 pm

Tickets \$20 adult \$10 child 14 yrs & under
Available at the Legion, Village Office,
Audrey Clark @ 284-3261 or at the
Community Centre door

Limited seats, door prize, small dance
floor

Cops for Cancer Mothers Day Raffle

1st prize – Frigon Island Framed Glass Print
Valued at \$1000
2nd prize – Portable DVD Player with Digital
Picture Frame

Print will be displayed @ Scotia Bank

Tickets are on sale now!!

Draw Date Saturday May 9th

COLYVAN PACIFIC

**REAL ESTATE MANAGEMENT
SERVICES LTD.**

**#202 – 5704 BALSAM STREET
VANCOUVER, BC V6M 4B9**

Catch the Wave
Business is Great!!

Port Alice Shopping Centre

We have a number of units of
various sizes for lease. We're open
for discussion.

**Contact: ColyVan Pacific
Steve Edwards
(604)683-8399 Ext. 234**

**Marble River Salmon Enhancement
Society**

Volunteers are welcome to join us. Call Lyle
or Maggie at 250-284-3591 for more
information.

FUND RAISER - FOR SALE

Wooden Planters – eight sided, Stainless
steel screws and banding, Preservative
treated – 16" high and 16" wide

Will last over 10 years!

Price - \$35.00 each

Call Lyle or Maggie at 250 284-3591

ROYAL CANADIAN LEGION, BRANCH 180

Hours are Monday to Friday 2 pm – closing time, Saturday & Sunday 1 pm – closing time. Off-sales close at 11:00 pm. Hours will change accordingly for special events or functions. Planning a party or function our facilities are available. Please call 250-284-3256.

Next meeting date: Sunday May 17th (Executive) 2:30 pm (General) 3:00 pm

Initiation paper work has been misplaced for some time – we are unable to find any records – everyone must be initiated again. You will receive a phone call and be asked to attend certain meetings – please help us to help you!!

Are you new to town and want to join or transfer to our Legion? Come in and put in your application. Come on down and play some darts, cards or shoot some pool, and have a cup of coffee. Get to know us.

We support the community with bursaries, assistance to the sick and elderly, or those in need, and donations to various events and organizations in town.

New information from Dominion Command: If you served in the USA armed forces, you are now allowed to join as a non-voting member.

You don't have anyone related to you in the forces ---no problem---you can still join. So come into the legion and put in your application

Dart League: Over for the season but your welcome to stop in and practice

ROYAL CANADIAN LEGION 180 AUXILIARY Not just for ladies anymore

What is the Legion Auxiliary?

It is a group of adults who work together to further the aims and objectives of the Royal Canadian Legion (R.C.L.).

Who may join?

Any adult that is interested. You are not required to be a relative of a veteran or military personnel.

What does the Auxiliary do?

They spend time raising funds for the Legion Branch, Legion Projects and for the community. Funding also is donated to hospitals, student bursaries and other organizations such as the Cancer Society, Heart and Stroke etc.

How often do we meet?

There is a general meeting on the 4th Monday of the month. Executive members meet on the 2nd Monday of the month.

If you are interested in joining or would like more information, please contact Rosie @250-284-3501

2008 Remembrance Day Poster Contest

Congratulations to **Susanna Chan** for winning 3rd prize for her Senior Poem in the Remembrance Day Poster Contest at the Provincial Level.

Well done Susanna

Mrs. Beckett
Poster Chariperson

“We Support our Troops” For Sale

The Legion is taking orders for items that say “We Support our Troops”

Red or Navy T-shirts - \$12.95

Ribbon Shaped Pins - \$1.95

Bumper Stickers - \$3.95

The catalogue and order form book is at the Legion.

Advertising Rates

Classified Ads	\$2.00/issue
Business Card Size	\$4.00/issue
¼ page	\$8.00/issue
½ page	\$16.00/issue
Full page	\$32.00/issue

HOUSES FOR SALE ON WEBSITE

If you would like to have your house listed on the Village's Web Page (www.portalice.ca) please submit information to the Village Office. The ad can have a maximum of 2 pictures, and a write-up with the following information:

1. Street Address
2. Price
3. Contact Info (name, phone, email, etc.)
4. Description (# of bedrooms, # of bathrooms, etc.) to a maximum of 20 words

Drop off your picture and write-up to the Village Office, or, if pictures are digital, then email the picture and write-up to: info@portalice.ca
There is a \$25.00 charge for this service.

Classified Ads

PORT ALICE STORAGE

Secure Fenced Lighted Compound
For further information, call John or Pat
284-6274

FOREST GROVE APARTMENTS

Spacious 2 Bedroom Apartments
 Start at \$650.00 per month
 Furnished 2 bedroom apartments with all utilities starting at \$890.00 per month but available for short term also.

"Subject to change and availability"

Resident Manager – covered parking
Call 284-6323 for details

EVERGREEN TERRACE TOWNHOUSE RENTALS

Spacious 3 Bedroom Townhouses
 Outdoor Pool and Covered Parking
 Call Pat at 250-284-6274

House for Sale: 1223 Maquinna, lovely private corner lot, 4 bedrooms, 1 ½ bathrooms unfinished basement, wood stove large yard
 Call Maria – 250-284-3228

Moving - Must Sell!!!

3 Level Walk-out strata, 2/3 bedroom possibility, some renos have been started to a great open floor plan, breath taking view of mountains & Neroutsos Inlet. Outdoor swimming pool, carport. \$89,900
 250-586-1976

For Rent: 2 bedroom apartment
w/balcony - ocean view
New Paint, new flooring
Well maintained building
Jan - 284-3201

House for Sale: 1119 Rupert 4 Bedrooms, 1 3/4 Bath, Private backyard, panoramic Oceanview, many upgrades, 5 appliances, approved wood stove.
 \$222,222.22 Max 250 284-0199

Boats for Sale:

Starcraft - 22' Aluminum, 165 HP Merc
 \$5800 o.b.o
 Crestliner - 14 ½' Fiberglass, 65 HP Merc
 \$1500 o.b.o
ALL OFFERS CONSIDERED
 250-284-6655

House for Sale: 1037 Matsqui Ave.
 3 bedroom, 2 bathroom, appliances included. Glass green house and storage shack 250-284-6655

For Sale

1992 VW Eurovan Westfalia
 2.5l straight 5 cylinder
 Exceptionally good on fuel and in mint condition with only 150,000 km
 \$23,900 o.b.o
 250-949-8745

For Sale

Trailer #11-1191 Marine Dr.
Alderwood Acres
2 bedroom, new kitchen cabinets, wood stove and oil furnace, large deck to front door, workshop 14x10 (approx)
 \$27,900
 Contact Mike or Erika @ 250-927-1834

Classified Ads

House for Sale

4 bedrooms, 2 ½ bathrooms, New kitchen
Private yard, New appliances
Large media room (finished basement)
Overlooking the marina
Call Pat or John 250-284-6274

For Sale

2 Dahone Folding Bicycles, 3 speed, 16"
Wheels. Ideal for taking along in your
RV or boat.
Complete with storage bags
\$150.00 each
Phone Lyle or Maggie at 250 284-3591

For Rent

3 Bedroom Furnished Apartment for Rent
Ocean Inlet View
Short or Long Term Rental
Available Daily, Weekly or Monthly
Fully Furnished
Huge Deck
Washer and Dryer
Cable/ Heat/ Electricity/ Parking included
Call 250-284-3434 to View

Townhouse for Sale

Level Entry - Main Floor, ½ bath on the
main floor, 3 bedrooms & full bath on the
second floor, full basement, 20' x 8' deck
off dining room, covered carport.
Furnished or vacant
Call Pat or John 250-284-6274

For Sale

2 bedroom Apartment, Renovated, new
paint and carpets, oceanview
Seaview Apts (2nd floor)
Call 250-949-9893

Condo for Sale

1 Bed plus bonus room,
#301-791 Marine Dr.
New paint and flooring/carpet, Can sell
part/furnished.
Asking 49,900 call Ray 250 216-4851

DOUBLE WIDE TRAILER FOR SALE

Double wide trailer on a corner lot. 3
bdrms, den, 2 bath, addition, wood stove,
4 appliances. Bring
your ideas and discover the great potential
in this spacious home.
#1- 1911 Marine Drive
\$60,000 obo
250-284-3548

For Rent

Recently renovated, lovely 3 bedroom
furnished apartment is available for rent
604-273-6546

For Sale

3 bedroom bright and cheerful newly-
painted and renovated condo. It is located
in a quiet complex on Marine Dr. and has
views of the ocean from it's balcony. For
more information please contact Woody at
604-727-2440

For Rent

Recently renovated, lovely 3 bedroom
furnished apartment. Please call 604-273-
6546 for further information.

For Rent

2 Bedroom Apt. With Balcony, Ocean view,
in Misty Manor.
\$550/Month call Ray 250 216-4851

For Rent

1 Bedroom Apt Furnished and updated, in
Misty Manor
\$550/month call Ray 250 216-4851

For Sale

2 bedroom, 1 ½ bathroom, new floor,
appliances and much more
\$96,000
Call 250-949-6319 for more info.

Condo for Sale

Misty Manor - 2 bedroom - ground floor -
ocean view - updated - will sell furnished
or unfurnished - asking \$59,900 o.b.o
Call Bill 360-933-4816

Classified Ads

For Sale

Double Kayak, 21 ft. Seaward, Model -
Passat G.3.
Fast and Stable, Lots of Storage Room.
Complete with paddles, skirts, and
pump.
Used one summer only. \$4000.00.obo
Phone Lyle or Maggie at 250 284-3591

REDUCED TO SELL

House for sale – 1155 Haida Ave.

1896 sq ft family home

- 3 bedrooms, 2 full baths
- Main floor family & living rooms as well as lower rumpus room
- Five new appliances (front loader washer & dryer)
- New kitchen with large pantry and separate dining room
- Wood burning stove & fireplace
- Large “in house” workshop
- Newer windows, vinyl siding & recent roof replacement
- Electrical upgrades
- Wonderful ocean and mountain views
- Lovely private back yard and deck
- Large “off street” paved easy parking

Reduced to the **exceptional price of \$189,000**

Owner will consider any reasonable offer

View by appointment only

403-549-2224 or 403-863-9616

House for sale - 1069 Rupert St.

2100 sq ft. family home or revenue income. 5 bedroom, 2 baths with large family room, oak kitchen with island and built in appliances - new metal roof, new siding, landscaped with sundeck and a view of the ocean, covered carport
Fully furnished (optional)

Priced to sell at \$298,000

Currently leased to executives

View by appointment only
Call Janice 250-284-6613

House for sale - 1109 Rupert St.

2200 sq ft. family home - all renovated with water view, 3 bedroom - large master suite (20x13'), custom closets, customized hardwood throughout top floor.

Custom yew wood kitchen cabinets - open design - recessed lighting - large double deck - rear - fenced yard - 2nd concrete patio - wheelchair accessible

Heat pump - sauna - enclosed carport with woodstove, large (20x30') bright workshop (complete with tools and equipment), new metal roof.

Priced at \$328,000

View by appointment only
Call Janice 250-284-6613
Serious inquiry's only



